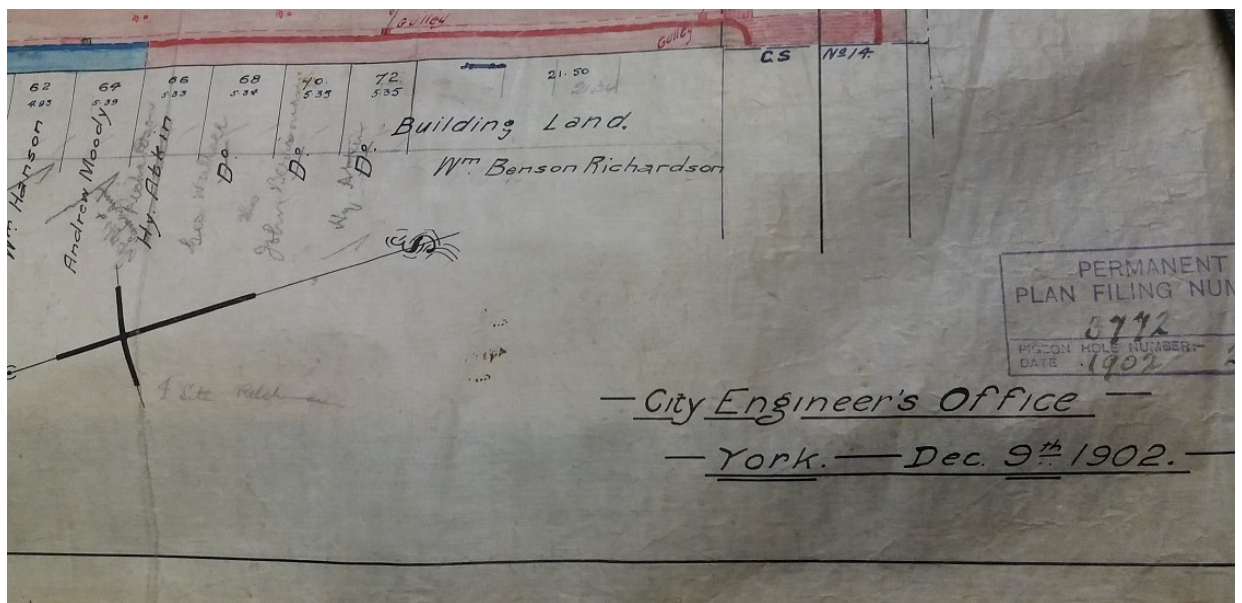


# Explore The role of the City Surveyor, Engineer, and Architect



## City Surveyor, Engineer, or Architect?

The plans in the architects' and engineers' collection were produced by individuals working for York City Council and its predecessor bodies (York Corporation and the Improvement Commissioners). Various officials (and their staff) were required to produce architectural drawings in the course of their work and these roles changed over time. Official titles found on plans in this collection include: 'City Surveyor', 'City Engineer and Surveyor', the 'City Engineer, Surveyor and Architect', 'City Engineer' and 'City Architect'.

What were these roles? And what did they involve?

### The City Surveyor

The role of City Surveyor dates from about 1850 and combined two separate roles:

The Commissioner Surveyor: established in 1827 the Commissioner Surveyor was responsible for improving the streets, pavements and sanitary conditions in York.

The Corporation Surveyor: established in 1832 by the City Corporation (the administrative body for York). The role included responsibility for York's City Walls, examining and reporting on the Corporation's property, respecting repairs and alterations, keeping financial records of repair work, and collecting rent from the Corporation's tenants. It also involved making 'such sketches as may be occasionally required'.

The post of City Surveyor was first held by John Bownas Atkinson (1807 – 1874) between 1850 and 1854. The role did not become full-time until 1887.

### City Surveyor and Engineer

The person who was appointed City Surveyor often held the joint role of City Engineer too. The City Engineer was technically responsible for the City Walls, the Mansion House, the Theatre, the Assembly Rooms and various other civic buildings in York.

### City Surveyor, Engineer, and Architect

In 1900 the role of City Surveyor and Engineer expanded to include responsibility for York's architecture and for creating new buildings. Alfred Creer became the first individual to hold the title of 'City Surveyor, Engineer and Architect' when he was given responsibility for designing the York City Lunatic Asylum at Naburn.

### Separate roles

In the 1950s the role of City Architect became a separate role to that of City Engineer and Surveyor, and a separate department, the City Architect's Office was established. In the late 1970s the title of City Architect was abolished and replaced with the role of Chief Architect.

## York's appointed architects, surveyors and engineers 1827-1962

### For the Improvement (City) Commissioners

Matthew Oates 1827 - 1841

George Cowper 1841 - 1850

### For York Corporation

John Rivis Willoughby 1833 - 1838

Johnathan Pulleyn 1838 - 1850

John Bownas Atkinson 1850 - 1854

Thomas Pickersgill 1854 - 1869

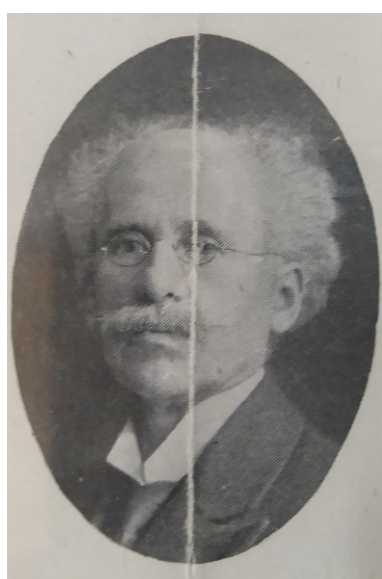
George Styan 1869 - 1887

Enoch George Mawbey 1887 - 1889

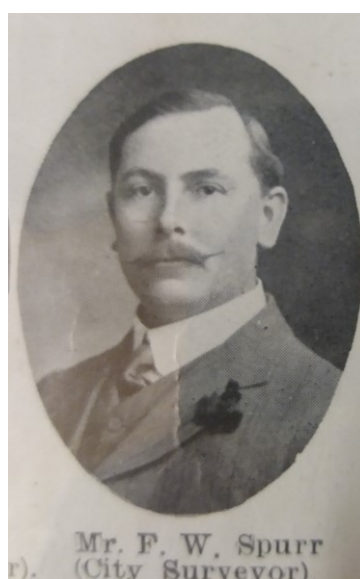
Alfred Creer 1889 - 1907

Frank Watson Spurr 1907 - 1935

Charles John Minter 1935 - 1962



Alfred Creer



Frank Watson Spurr